

Implementing a Recovery Friendly Workplace Initiative



COP - R C O R P

Communities of Practice for Rural Communities Opioid Response Program

Scan Me!

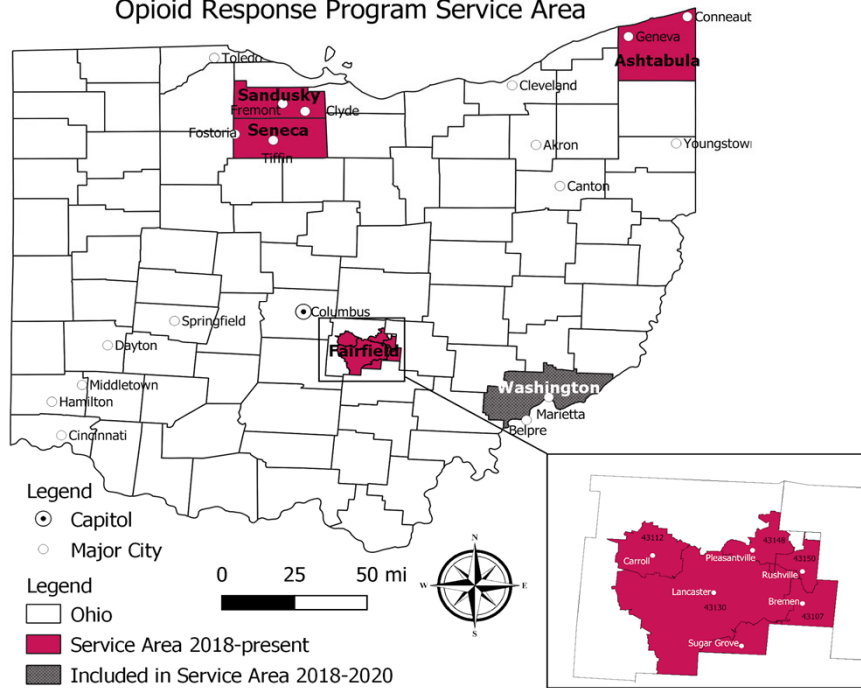
All presentation information can be found on our website. Please scan here to access the presentation content. We invite you to stay awhile and visit other pages on the website as well.



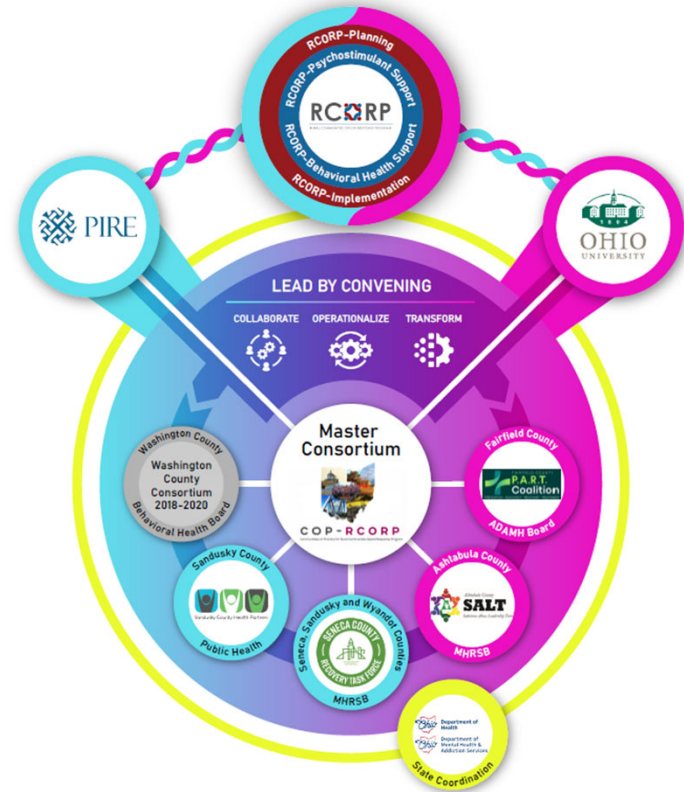
<https://communitiesofpractice-rcorp.com/at-conferences/>

About COP-RCORP

Community of Practice Rural Community Opioid Response Program Service Area



Schweinhart, A. (November 2020). Sourced from: census.gov and simplemaps.com
 Made possible by grants GA1RH335320102 and GA1RH335290102 from the Health Resources and Services Administration (HRSA), an operating division of the U.S. Department of Health and Human Services. Contents are solely the responsibility of the authors and do not necessarily represent the official views of HRSA or the U.S. Department of Health and Human Services.



Schweinhart, A., Raffle, H., Courser, M., & Dacanay, J. (2024). COP-RCORP Organizational Chart. Pacific Institute for Research and Evaluation, Calverton, MD and Ohio University's Vorhees School of Leadership and Public Service, Athens, OH. This project was made possible by grants #G25RH32461, #GA1RH33532, #G25RH32459, #GA1RH33529, #H7NRH42563, #H7NRH45748, and #G28RH46290 from the Health Resources and Services Administration (HRSA), an operating division of the U.S. Department of Health and Human Services. This figure is solely the responsibility of the authors and does not necessarily represent the official views of HRSA or the U.S. Department of Health and Human Services.

Our COP-RCORP Grant Portfolio

RCORP Planning

- G25RH32459 (Ohio University)
- G25RH32461 (PIRE)

RCORP Implementation

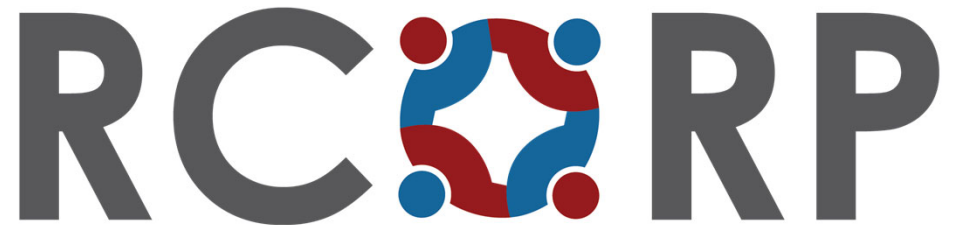
- GA1RH33529 (Ohio University)
- GA1RH33532 (PIRE)

RCORP Psychostimulant Support

- H7NRH42563 (PIRE)
- H7NRH45748 (Ohio University)

RCORP Behavioral Health Support

- G28RH46290 (Ohio University)



RURAL COMMUNITIES OPIOID RESPONSE PROGRAM

Acknowledgement

This presentation was made possible by grants G28RH46290 from the Health Resources and Services Administration (HRSA), an operating division of the U.S. Department of Health and Human Services. Its contents are solely the responsibility of the authors and do not necessarily represent the official views of HRSA or the U.S. Department of Health and Human Services.

Presentation Roadmap

Phase 1: Engage in Initial Exploration

Phase 2: Conduct Community
Readiness Assessment

Phase 3: RecoveryOhio Announces
Recovery Friendly Workplace Initiative

Phase 4: Lead By Example

Phase 1: Initial Exploration (Summer 2023)



Engaged in Research and Fact Finding (National Level)

New Hampshire

Launched in 2018, New Hampshire's Recovery Friendly Workplace (RFW) was an initiative led by Governor Chris Sununu and currently administered by Granite United Way.

<https://www.recoveryfriendlyworkplace.com/>

Phase 1: Initial Exploration (Summer 2023)



Engaged in Research and Fact Finding (State Level)

Hamilton County (Cincinnati)

Hamilton County Public Health formally adopted Recovery Friendly Hamilton County (RFHC) on April 11, 2022.

Urban- As of the 2020 census, the population was 830,639, making it the third-most populous county in the state.

<https://hamiltoncountyhealth.org/services/harm-reduction-program/recovery-friendly-hamilton-county/>

Phase 1: Initial Exploration (December 2023)

Quarterly COP-RCORP Master Consortium Meeting

Goal 1: Learn more about RFW Initiatives from those already engaged in the work at the national and state levels

Goal 2: Discover if Ohio had any plans of moving forward like New Hampshire

Hosted a Hybrid Meet & Greet

- Members from all four local COP-RCORP Consortia (in-person)
- Representative from RecoveryOhio (In-person)
- Representative from Recovery Friendly Workplace New Hampshire (Virtual)
- Representative from Recovery Friendly Hamilton County (Virtual)

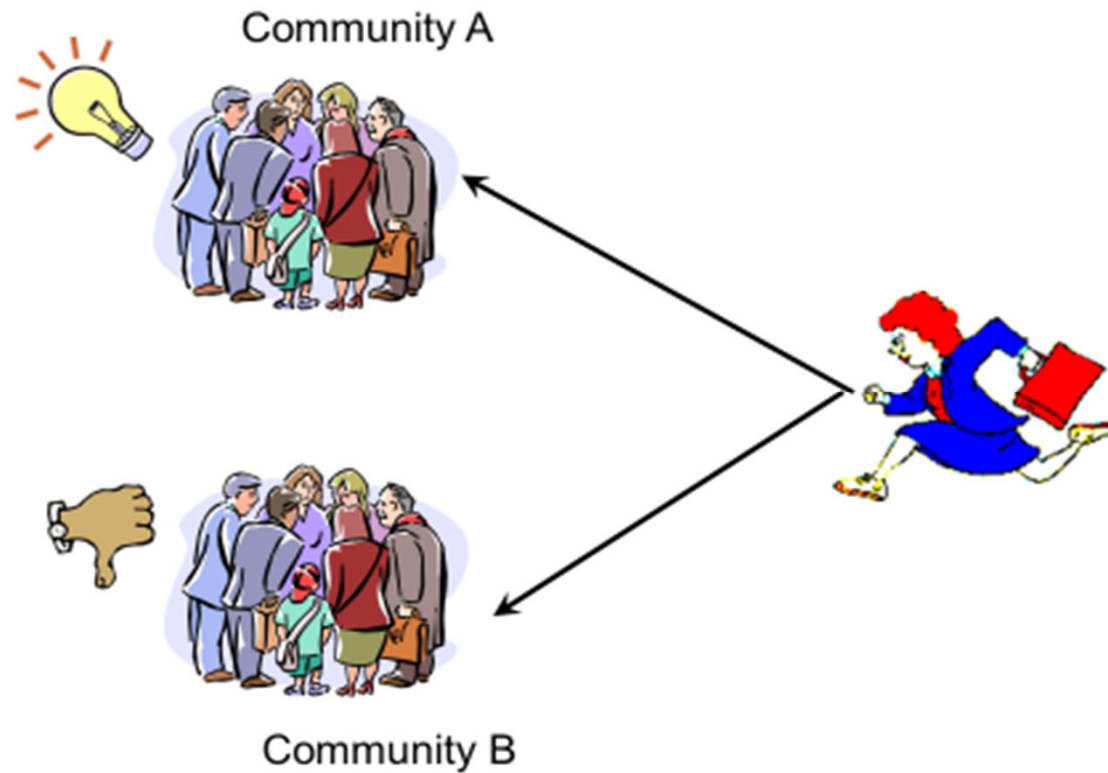
Phase 2: Conduct Community Readiness Assessment (March 2024)

We learned that RFW Initiatives had challenges getting started and most were using “sales techniques” to garner interest and support.

Our team was versed in prevention and knew that **community readiness** is key for any prevention intervention.



Our Starting Point: A Common Experience



Community Readiness for Community Change

TRI-ETHNIC CENTER
FOR PREVENTION RESEARCH



Colorado
State
University

A systematic method for assessing the level of readiness of a community

- A series of structured interviews
- Measures readiness on 5 dimensions
- Includes 9 stages of readiness
- Identifies strengths and weaknesses
- Works within the community culture and capacity

Phase 2: Conduct Community Readiness Assessment (March 2024)

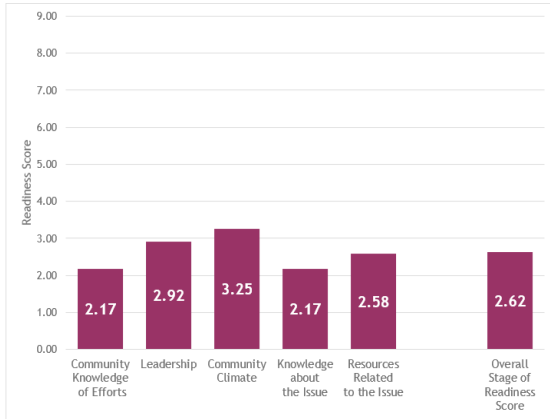
Our team has built a robust self-paced online trainings for conducting Community Readiness Assessments within the context of suicide prevention for the state of Ohio.



The COP-RCORP website has tailored the tools to support content specific to RFW.



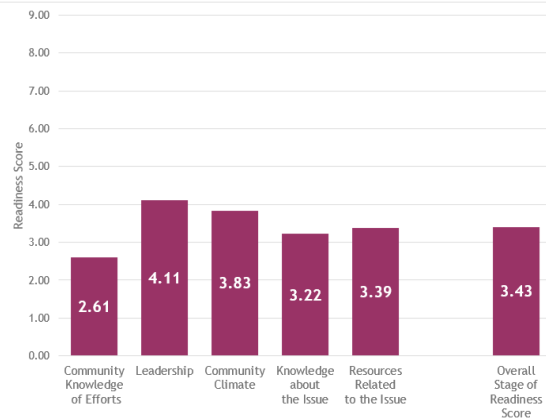
Phase 2: Conduct Community Readiness Assessment (March 2024)



Fairfield County (August 2024)

Overall Score: 2.62

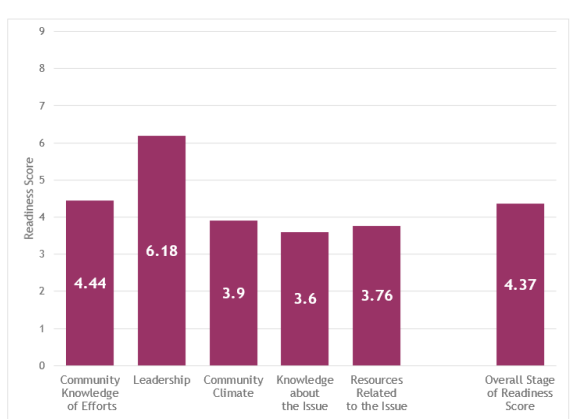
Overall Stage: Denial/Resistance



Sandusky & Seneca Counties (September 2024)

Overall Score: 3.43

Overall Stage: Vague Awareness



Ashtabula County (December 2024)

Overall Score: 4.37

Overall Stage: Preplanning

Phase 3: RecoveryOhio Announces Recovery Friendly Workplace Initiative (8/2024)



Phase 3: RecoveryOhio Announces Recovery Friendly Workplace Initiative (8/2024)



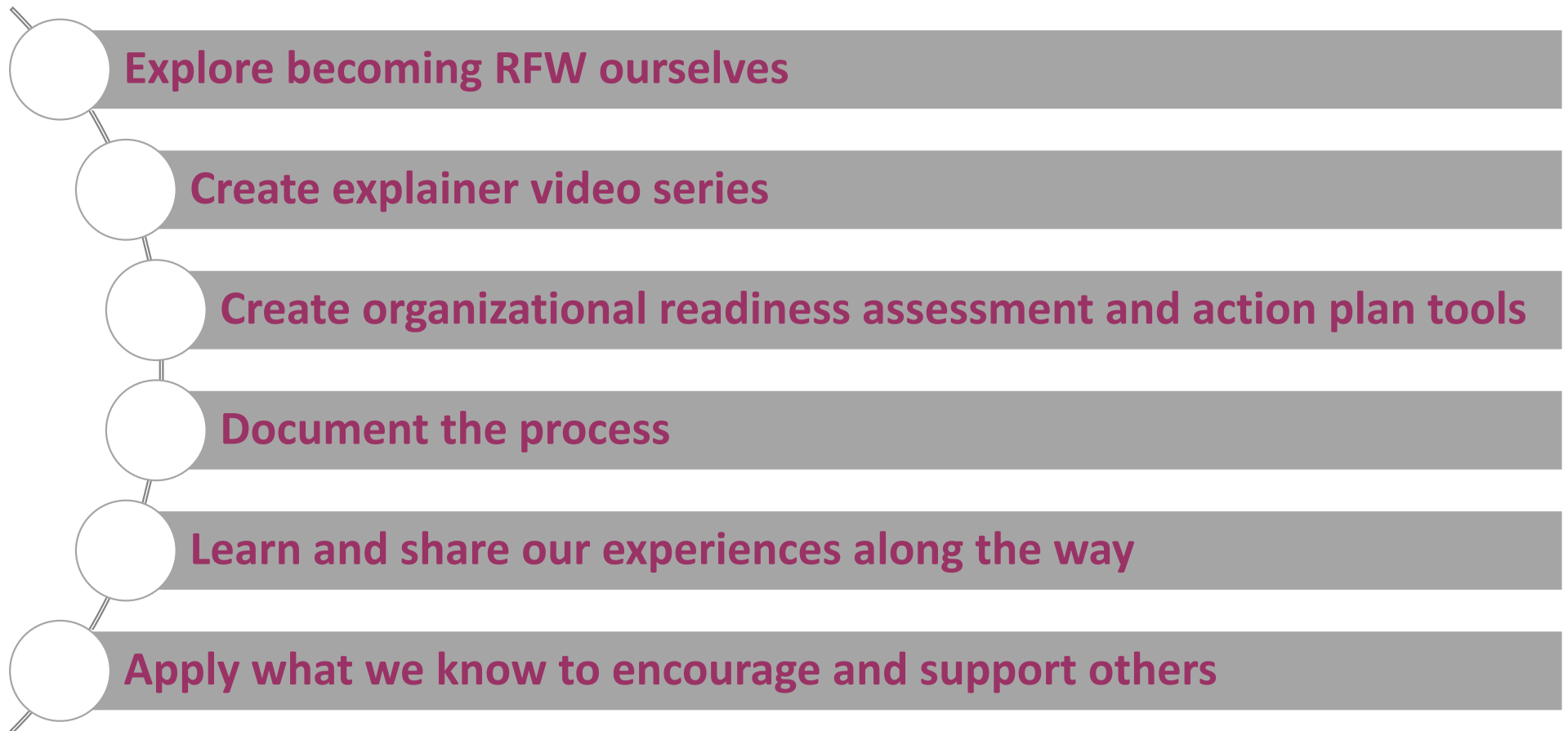
Strategy Shift

From: How can we stand up a RFW initiative in our consortium area?

To: How can we support the **authentic** implementation of Ohio's RFW Initiative by employers in our consortium area?

<https://mha.ohio.gov/know-our-programs-and-services/ohio-recovery-friendly-workplace/>

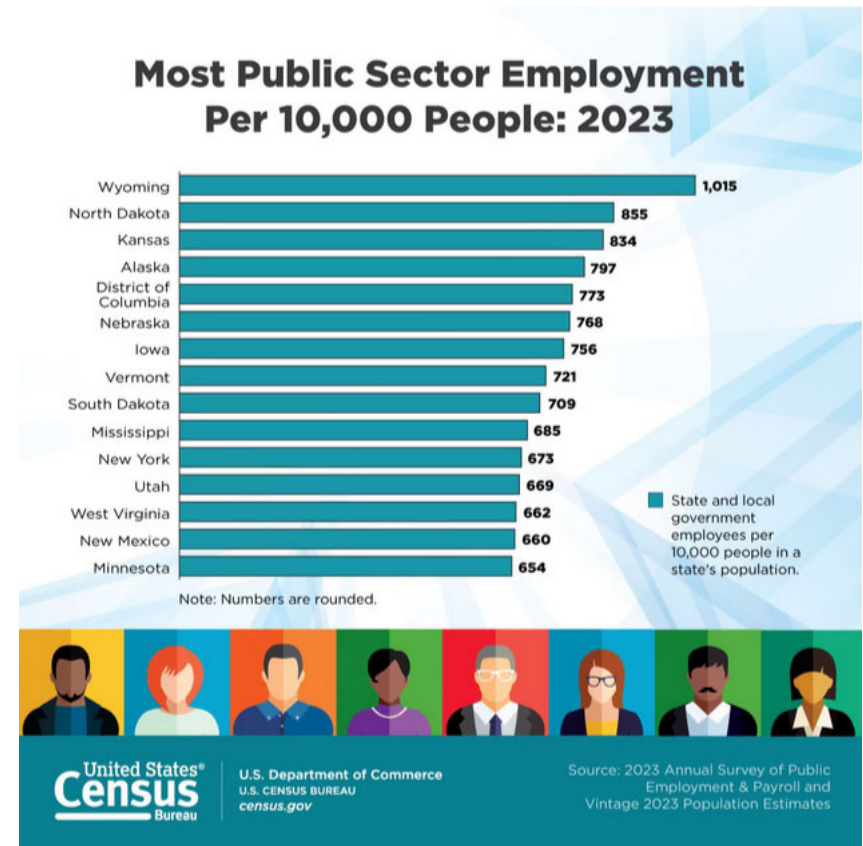
Phase 4: Lead by Example

- 
- Explore becoming RFW ourselves
 - Create explainer video series
 - Create organizational readiness assessment and action plan tools
 - Document the process
 - Learn and share our experiences along the way
 - Apply what we know to encourage and support others

Lessons Learned (So Far!)

1. Trust the process!
2. Stay flexible.
3. Community Readiness is important.
4. Organizational readiness is *as* important as Community Readiness.
5. Workplace = Private sector (S, M, L businesses), Public sector, Nonprofit employers

Don't forget the public sector! In rural America, the public sector is often one of the largest employers.



Experiences from the Field: A Panel Discussion



COP - R C O R P

Communities of Practice for Rural Communities Opioid Response Program

Ashtabula County, Ohio

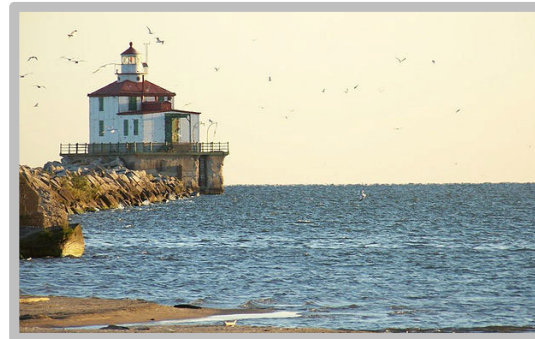


About Me



Backbone Organization

Known For



Local Coalition



Fairfield County, Ohio



About Me



Backbone Organization

Known For



Local Coalition



Sandusky County, Ohio



About Me



Backbone Organization

Known For



Local Coalition



Seneca County, Ohio



About Me



Backbone Organization

Known For



Local Coalition



With Gratitude

Nicole Williams (coordinator@mhsosw.org)

Mental Health and Recovery Service Board for Seneca, Ottawa, Sandusky, and Wyandot Counties

Jamie Belcher (JBelcher@scpublichealth.com)

Sandusky County Public Health Department

Kaitie Hart (kpark@ashtabulamhrs.org)

Ashtabula County Mental Health & Recovery Services Board

Miranda Gray (mgray@fairfieldadamh.org)

Fairfield County ADAMH Board

Cale G. Burke (cale.burke@ohio.edu)

Ohio University's Voinovich School of Leadership and Public Service

Matt Courser (mcourser@pire.org)

Pacific Institute for Research and Evaluation (PIRE)

Holly Raffle (raffle@ohio.edu)

Ohio University's Voinovich School of Leadership and Public Service

Questions and Discussion



COP - R C O R P

Communities of Practice for Rural Communities Opioid Response Program